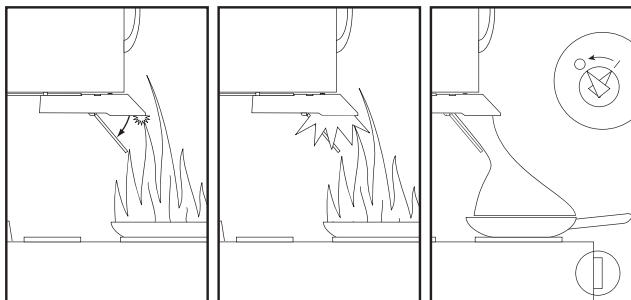




[www.StovetopFirestop.com](http://www.StovetopFirestop.com)

## How does it work?



When the flame touches the bottom of StoveTop FireStop® Microhood, a small pyrotechnic opens the ramp of the housing, then the petals of the can. The fire suppression powder pours out of the StoveTop FireStop® Microhood, and smothers the fire in the pan. Turn the burner to "OFF" to prevent reflash. *Clean up is easy with a vacuum cleaner and a wet towel. Unit must be replaced.*

## Residential Use Only

### Active ingredient:

WPI BC, bicarbonate of soda, 12-15 ounces per unit.  
(MSDS - WPI BC)

## ATTENTION

THESE REQUIREMENTS MUST BE MET & INSTALLATION INSTRUCTIONS FOLLOWED FOR STOVETOP FIRESTOP® MICROHOOD TO FUNCTION PROPERLY.

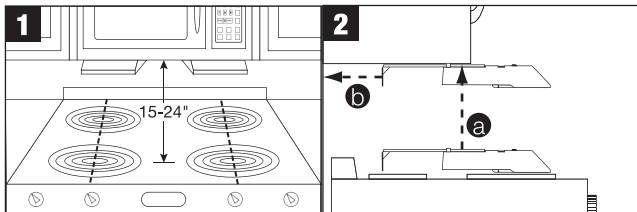
### Maintenance:

Must be replaced no later than the date on the bottom of the unit. Shelf life is **five (5) years**. Does not need to be recharged or inspected by a fire service professional.

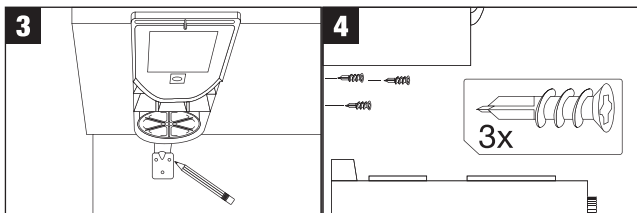
## WARNING

THIS DEVICE IS NOT INTENDED FOR DEEP FAT FRYING. WHEN ACTIVATED, THIS DEVICE MAY CAUSE GREASE FIRES TO SPLASH. IF THE HEAT SOURCE OF AN APPLIANCE CONTAINING A FIRE IS NOT IMMEDIATELY SHUT OFF AFTER DISCHARGE OF THIS DEVICE, THE FIRE MAY REIGNITE.

## Installation Instructions



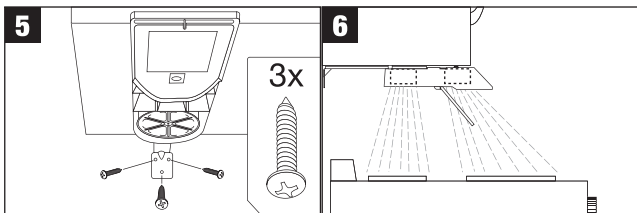
Acceptable distance between microhood & stovetop is 15-24". Center each StoveTop FireStop® Microhood over one set of front & back burners [1]. Lift unit up to touch bottom of microhood, then slide back until bracket touches the wall [2].



Mark the location of the bracket holes [3]. If you are attaching the Microhood to a gypsum wall board (3/8" to 5/8" in thickness) use the included hardware. Screw in the enclosed screw anchor using a #2 Phillips bit. [4] No pre drilling is necessary.



***If you are attaching the StoveTop FireStop® Microhood to another material such as tile, masonry, or other materials use a plastic drive wall anchor with a #8 screw available at your local home supply store. Follow manufacturer's directions on proper installation of anchors.***



With anchors installed, align StoveTop FireStop® Microhood mounting holes with anchors and insert screws with a #2 Phillips screwdriver [5], or fasteners included with plastic drive wall anchors. Repeat all steps for the other Microhood.

One StoveTop FireStop® Microhood unit will cover one front & back burner. [6]